



FRB-100

FRB-90

COLOR/STP

VN

**F.G.I.** TECHNOLOGY

**Long Scale**

## REVOLVER BASS FRB-90

¥90,000

NECK/Maple  
FINGER BOARD/Rosewood, 24F., 350R, 3400'Scale  
NECK JOIN/ Bolt-On  
BODY/Southern Yellow Pine or Spruce  
PICK UP/NEW F.G.I. TECHNOLOGY-FJ  
CONTROL/Volume, Balancer, Treble, Bass (Active Tone Control)  
BRIDGE/BB-4010  
COLOR/BL, SW, STP, VN

## REVOLVER BASS FRB-100

¥100,000

NECK/Maple  
FINGER BOARD/Rosewood, 24F., 350R, 3400'Scale  
NECK JOIN/ Bolt-On  
BODY/Southern Yellow Pine or Spruce  
PICK UP/NEW F.G.I. TECHNOLOGY-FJ  
CONTROL/Volume, Balancer, Treble, Bass (Active Tone Control)  
BRIDGE/BB-5010  
COLOR/SBL, STW, STP, VN

REVOLVER BASS

# FRB-75



COLOR / SBL

REVOLVER BASS  
**FRB-75**  
¥75,000

NECK/Maple  
FINGER BOARD/Rosewood, 24F, 350R, 34.00"Scale  
NECK JOIN-T/Bolt-On  
BODY/5m  
PICK UP/NEW EGL TECHNOLOGY-PJ  
CONTROL/Volume, Balance, Treble, Bass/Active Tone Control  
BRIDGE/BB-8G  
COLOR/SBL, STW, STP, YN

Long Scale



COLOR/STP



STW



YN

REVOLVER BASS

# FRB-60



COLOR/SW

REVOLVER BASS  
**FRB-60**  
¥60,000

NECK/Maple  
FINGER BOARD/Rosewood, 24F., 350R, 34.00"Scale  
NECK JOINT/Bolt-On  
BODY/Basswood  
PICKUP/VPS-2[coil], VIB-2B[pass]  
CONTROL/2volume, 1tone  
BRIDGE/98-BB  
COLOR/BL, SW, RED, MTV, MTB

Long Scale



COLOR/BL



RED



MTB

REVOLVER BASS

# FRB-70



COLOR/ST



# REVOLVER BASS FRB-70

¥70,000

NECK/M Maple  
FINGER BOARD/Rosewood, 21F., 3,50R, 32.00" Scale  
NECK JOINT/Bolt-On  
BODY/Basswood or 5pc  
PICK UP/NEW F.G.I. TECHNOLOGY-PJ  
CONTROL/M, Volume, Balance, Treble, Bass (Active Tone Control)  
BRIDGE/FR-70  
COLOR/BL, SW, STB

## Medium Scale



REVOLVER BASS  
**FRB-55**



CO. OF. 81



REVOLVER BASS  
**FRB-55**

¥55,000

NECK/Neple  
FINGER BOARD/Rosewood, 21F., 150R, 32.00"Scale  
NECK JOINT/Bolt-On  
BODY/Basswood  
PICK UP/VFB-2(front), V18-2R(rear)  
CONTROL/2volume, 1tone  
BRIDGE,18-76  
COLOR/BL, SW, RED, MTV, MTB

**Medium Scale**





HISASHI IMAI/BUCK-TICK



HIDEHIKO HOSHINO/BUCK-TICK



## *PROCEDURE MODEL*

プロシージャー・モデルはギター、ベースの基本的機能、バランスを崩さないようにボディ、ネックをスケールダウンし、ショート・スケールならではのメリットを十分に生かし音楽性、演奏性に新しい可能性を追求したモデルです。



PROCEDURE MODEL

PR-45

¥45,000

NECK/Maple  
FINGER BOARD/Rosewood, 22F., 350B., 24.00"Scale  
NECK JOINT/Bolt-On  
BODY/Sesewood  
PICK UP/DG-1(front, center), SB2(rear)  
CONTROL/Volume, Tone, 5-way Lever SW.  
BRIDGE/Synchro with Kala-Edge Tremolo-B  
COLOR/BL. SW, RED, P, Y

COL. CR. BL.



"SHORT SCALE & CUSTOM BODY"

SW



PROCEDURE MODEL

**PT-45**

¥45,000

NECK/Maple  
FINGER BOARD/Rosewood, 22F, 350B, 24.00"Scale  
NECK JOINT/Bolt-On  
BODY/Basswood  
PICK UP/DS-1  
CONTROL/Volume, Tone, Toggle SW  
BRIDGE/Combination-B  
COLOR/BL, SW

COLOR/BL



**"SHORT SCALE & CUSTOM BODY"**

SW



COLOR/BL

PROCEDURE MODEL  
**PRB-45**  
¥45,000

NECK/Maple  
FINGER BOARD/Rosewood, 21F, 350R, 30.37" Scale  
NECK JOINT/Bolt-On  
BODY/Basswood  
PICK UP/VP3-3(front), VIB-3(back)  
CONTROL/2-volume, 1-tone  
BRIDGE/BB-7C  
COLOR/BL, SW, RED, P, Y



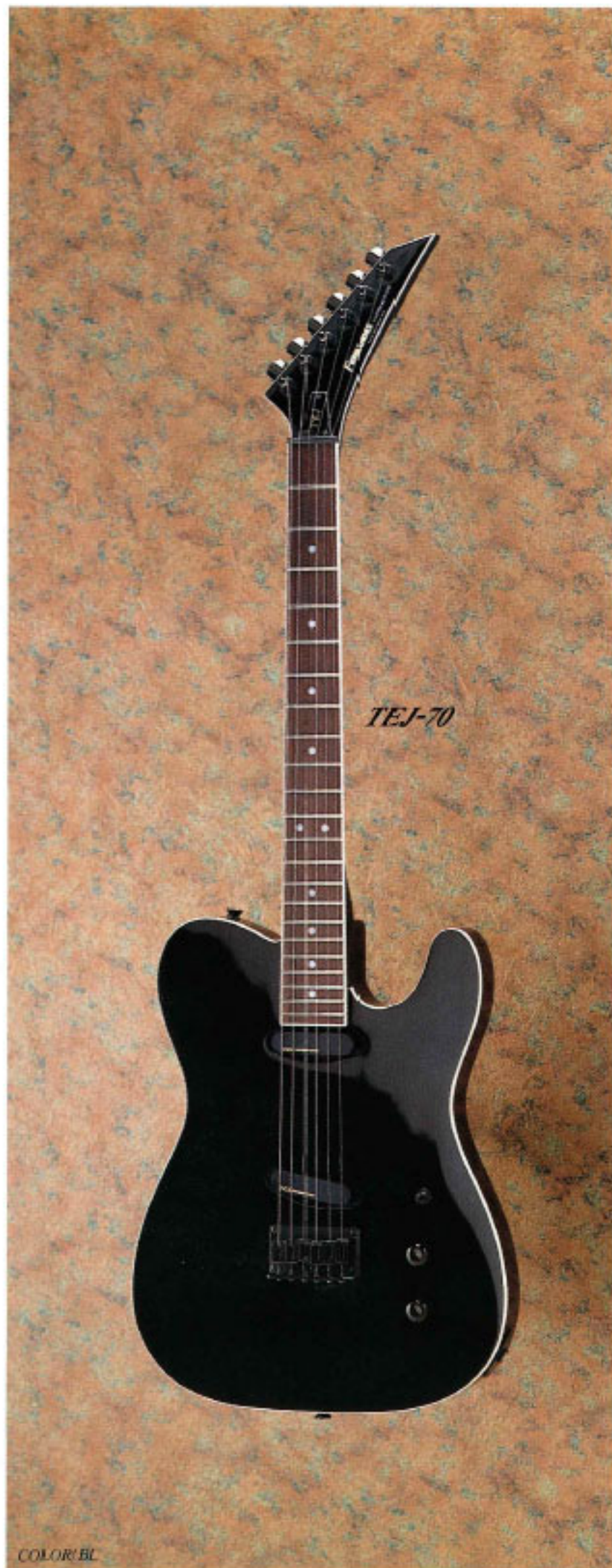
SW

"SHORT SCALE & CUSTOM BODY"

*TEJ*







*TEJ-70*

COLOR/BL



*TEJB-70*

**Medium Scale**

**EGL TECHNOLOGY**

***TEJ-70***

¥70,000

NECK/Maple  
FINGER BOARD/Rosewood, 22F, 350R, 25.50"Scale  
NECK JOINT/Bolt-On  
BODY/Basswood  
PICKUP/NEW F.G.I. TECHNOLOGY-T  
CONTROL/1volume, 1tone Mini SW.  
BRIDGE/Combination-B  
COLOR/BL, SW

***TEJB-70***

¥70,000

NECK/Maple  
FINGER BOARD/Rosewood, 21F, 350R, 32.00"Scale  
NECK JOINT/Bolt-On  
BODY/Basswood  
PICKUP/NEW F.G.I. TECHNOLOGY-J  
CONTROL/2volume, 1tone  
BRIDGE/BB-5B  
COLOR/BL

# PRO MODEL

フェルナンデスのプロ・ミュージシャン専任スタッフによってカスタム・ビルドアップされたギターがこの「プロ・モデル」です。プロ・ミュージシャンから製作依頼のあったカスタム・モデルと同レベルのギターということが出来ます。



TOMOYASU HOTEL/COMPLEX

受注されてから製作されるモデルもありますので、6ヶ月以上の納期を必要とされる場合があります。オーダー時に御確認ください。ご希望、お問い合わせは、基本仕様以外のオーダーは受け付けておりません。また、プロ・ミュージシャン本人のものに仕様変更のあった場合、予告なく「プロ・モデル」の仕様変更がおこなわれる場合もありますので、御了承ください。



*MV-480HT (HOTEL MODEL)*  
¥480,000



*TE-240HT (HOTEL MODEL)*  
¥240,000

**ZG-280NT** (TOSHIRO MODEL)  
¥280,000





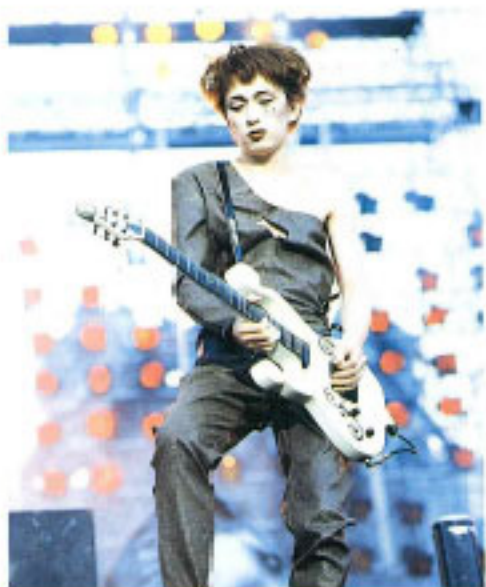
**TE-220KS** (KYOICHI MODEL)  
¥220,000

KYOICHI SUGIMOTO

## *BT-480MM (IMAI MODEL)*

¥480,000

このモデルのみ、右用標準タイプを受注いたします。(¥480,000)



## *BT-460HH (HOSHINO MODEL)*

¥460,000



*MG-480X (HIDE MODEL)*  
¥480,000



# MUSICIAN'S LICENCE MODEL



## MG-80X

¥80,000

NECK/Maple  
FINGER BOARD/Rosewood, 24F., 350R, 24.75"Scale  
NECK JOINT/Bolt-On  
BODY/Mahogany  
PICK UP/SH-1000T, DF-1000T  
CONTROL/Volume, Toggle SW., Mini SW.  
BRIDGE/Tune O Matic, Stop Tailpiece-G  
COLOR/BL



## SG-90P

¥90,000

NECK/Mahogany  
FINGER BOARD/Rosewood, 22F., 250R, 24.75"Scale  
NECK JOINT/Set Neck  
BODY/Mahogany  
PICK UP/VH-1  
CONTROL/2volume, 2tone, Toggle SW.  
BRIDGE/Tune O Matic, Stop Tailpiece-G  
COLOR/Y



## TEB-75MW

¥75,000

NECK/Maple  
FINGER BOARD/Rosewood, 20F., 180R, 34.00"Scale  
NECK JOINT/Bolt-On  
BODY/Basswood  
PICK UP/F.G.I. TECHNOLOGY-P  
CONTROL/Volume, Treble, Bass(Active Tone Control)  
BRIDGE/BB-66  
COLOR/BL



FGI TECHNOLOGY

**HOTEL MODEL**  
**TE-95HT**  
¥95,000

NECK/Maple  
FINGER BOARD/Rosewood, 22F, 400R, 25.50" Scale  
NECK JOINT/Bolt-On  
BODY/Alder  
PICKUP/NEW F.G.I. TECHNOLOGY-T  
CONTROL/Volume, Tone, Mini SW  
BRIDGE/NEW Combination Bridge  
COLOR/BL-SW, SW-BL

COLOR/BL-SW

FGI TECHNOLOGY

**HOTEL MODEL**  
**MV-95HT**  
¥95,000

NECK/Maple  
FINGER BOARD/Ebony, 22F, 350R, 24.75" Scale  
NECK JOINT/Set Neck  
BODY/Alder  
PICKUP/F.G.I. TECHNOLOGY-I  
CONTROL/Volume, Tone, Toggle SW  
BRIDGE/Combination Bridge-G  
COLOR/BL, PW

BL



"BUCK-TICK" IMAI MODEL  
**TE-80BT**  
¥80,000

NECK/Maple  
FINGER BOARD/Rosewood, 24F, 350R, 25.50"Scale  
NECK JOINT/Bolt-On  
BODY/Basswood  
PICKUP/NEW F.G.I. TECHNOLOGY-T  
CONTROL/Volume, Mini SW. x2  
BRIDGE/NEW Combination Bridge  
COLOR/SW



"BUCK-TICK" IMAI MODEL  
**STJ-80BT**  
¥80,000

NECK/Maple  
FINGER BOARD/Rosewood, 24F, 350R, 25.50"Scale  
NECK JOINT/Bolt-On  
BODY/Basswood  
PICKUP/NEW F.G.I. TECHNOLOGY-T  
CONTROL/Volume, Tone, Toggle SW.  
BRIDGE/NEW Combination Bridge  
COLOR/SW



"BUCK-TICK" HO-SHINO MODEL  
**TE-75BT**  
¥75,000

NECK/Maple  
FINGER BOARD/Rosewood, 22F, 350R, 25.50"Scale  
NECK JOINT/Bolt-On  
BODY/Basswood  
PICKUP/NEW F.G.I. TECHNOLOGY-T  
CONTROL/Volume, Mini SW.  
BRIDGE/NEW Combination Bridge  
COLOR/SW



## ST-85NT

¥85,000

NECK/Maple  
FINGER BOARD/Rosewood, 22F, 350R, 25.50"Scale  
NECK JOINT/Bolt-On  
BODY/Soft Maple  
PICK UP/V5-2(front, center), V4-3(rear)  
CONTROL/Volume, 2tone, 5way Lever SW.  
BRIDGE/FRT-48  
COLOR/VR-body, BL-neck



## YB-75

¥75,000

NECK/Maple  
FINGER BOARD/Maple, 20F, 170R, 34.00"Scale  
NECK JOINT/Bolt-On  
BODY/Maple  
PICK UP/WJB-25(front), WJB-25(rear)  
CONTROL/2volume, 1tone  
BRIDGE/Combination-Cr  
COLOR/W



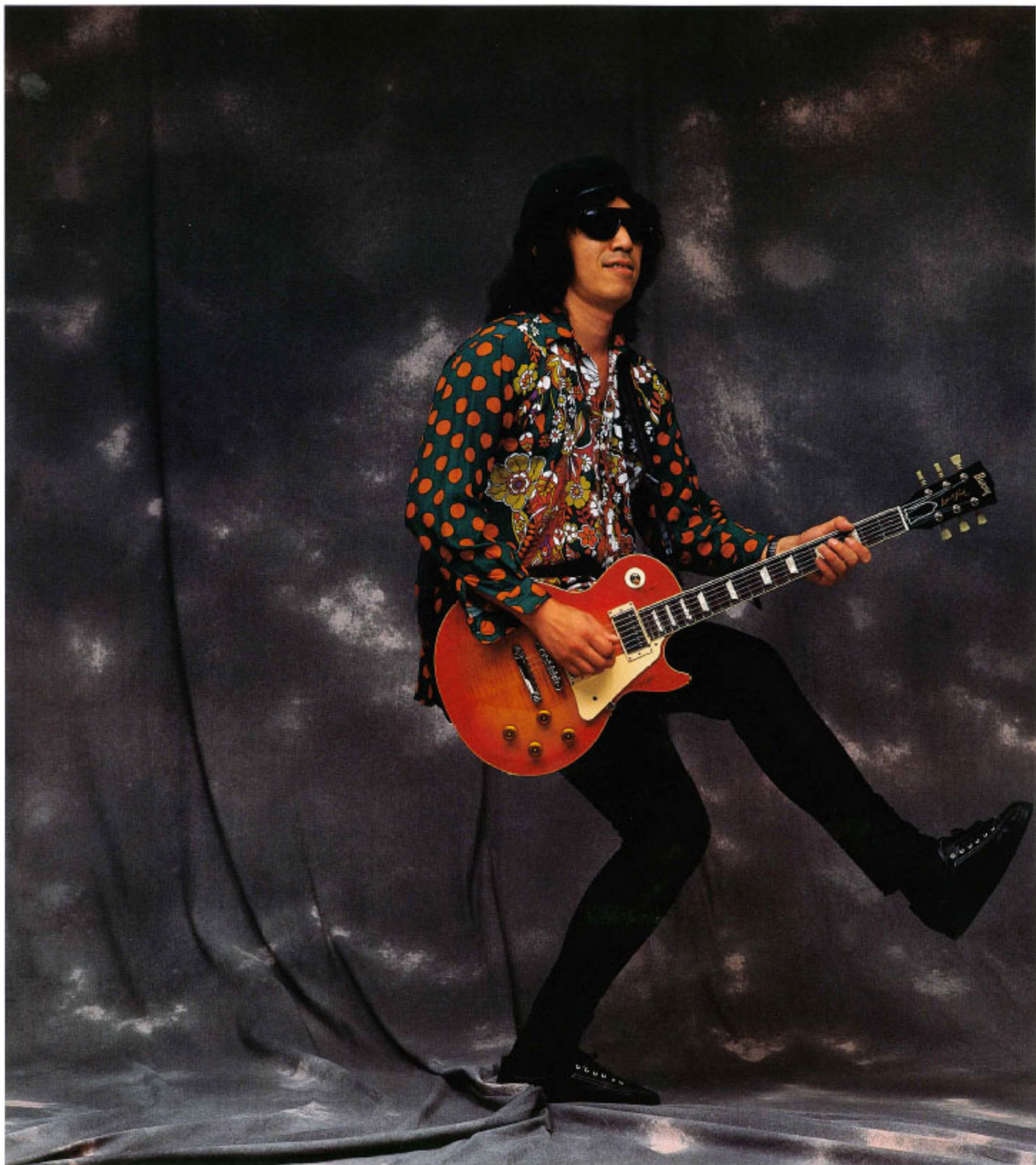
## FB-80Z

¥80,000

NECK/Maple  
FINGER BOARD/Rosewood, 22F, 250R, 24.75"Scale  
NECK JOINT/Bolt-On  
BODY/Mahogany  
PICK UP/VH-1(front, center), VH-6(rear)  
CONTROL/2volume, 2tone, Toggle SW.  
BRIDGE/Tune 0 Machis, Stop Tailpiece-M  
COLOR/FR



TAKESHI NISHIYAMA/HOUND DOG



# THE FUNCTION "FST"

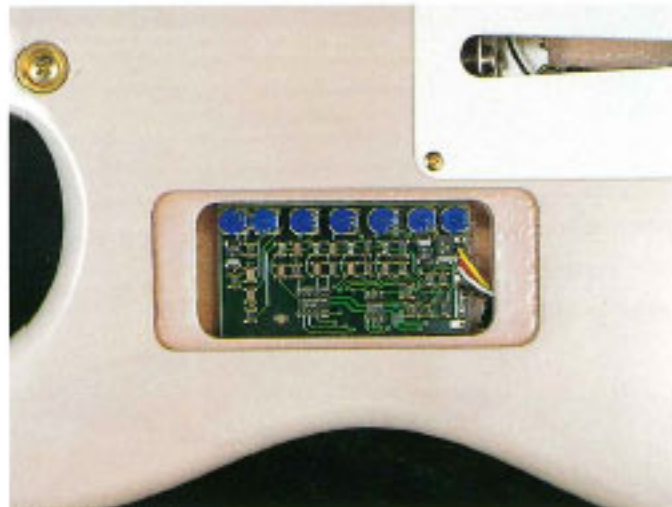
“ザ・ファンクション”——それは、フェルナンデスのギター・テクノロジーが、機能性、演奏性、そしてサウンドを極限まで追求した、クオリティの融合体だ。



THE FUNCTION  
**FST-140**



EVANS P.U.



SHADOW EQ.



FRT TREMOLO SYSTEM